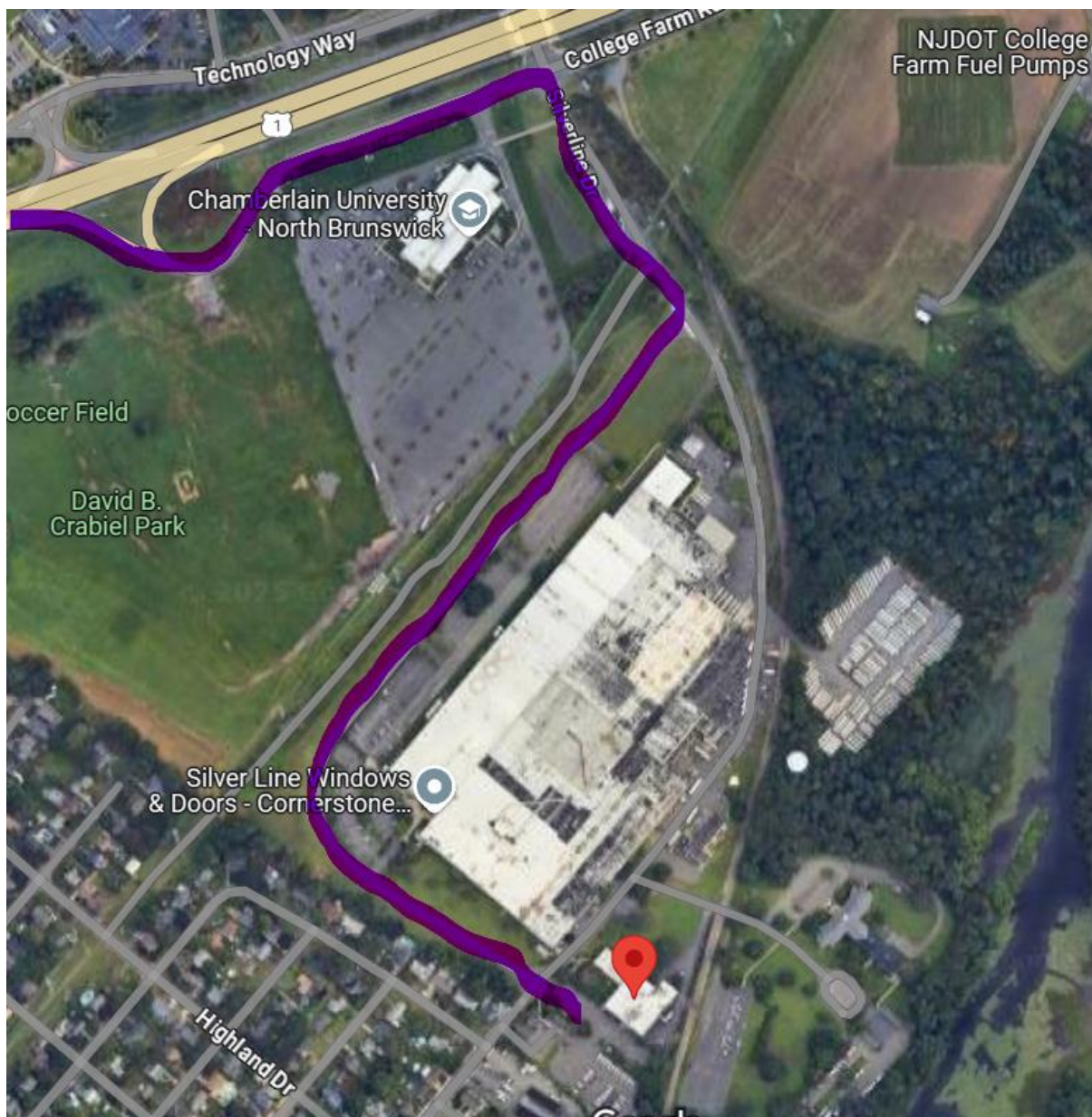


Supplement to Directions with Google Map Images

From Route 1 North:

- Take the College Farm Road East exit off Route 1 North.
- At the traffic light, make a right onto Silverline Drive.
- Pass the guard gate and make the first right to continue on Silverline Drive. (There will be signs for Lakeside Complex with an arrow going right). Follow the road for approximately ½ a mile.
- At the stop sign, bear right toward the parking lot and park in any spot without a designated sign. (There will be a sign that says “Central Jersey Family Health Consortium” with an arrow towards “Parking.”)
- Once parked, follow signs toward a path to the Central Jersey Family Health Consortium Entrance.



From Route 1 South:

- Take the College Farm Road exit towards Squibb Drive.
- Continue straight for approximately ¼ mile.
- At the traffic light, make a left onto Silverline Drive and through the underpass.
- Pass the guard gate and make the first right to continue on Silverline Drive. (There will be signs for Lakeside Complex with an arrow going right). Follow the road for approximately ½ a mile.
- At the stop sign, bear right toward the parking lot and park in any spot without a designated sign. (There will be a sign that says “Central Jersey Family Health Consortium” with an arrow towards “Parking.”)
- Once parked, follow signs toward a path to the Central Jersey Family Health Consortium Entrance.

